

73. TYPICAL DETAILS OF TRANSVERSE REINFORCEMENT TO COLUMN REINFORCEMENT.

74. - BLANK -

NOTE:-

- 'Ld' IS NOT LESS THAN :-
 (a) LARGER LATERAL DIMENSION OF THE COLUMN.
 (b) 1/6 OF CLEAR 'hst' OF COLUMN.
 (c) 450 MM
- IN THE EXTERIOR AND CORNER JOINTS, ALL 135° HOOKS OF CROSS TIES/ LINKS SHOULD BE ALONG THE OUTER FACE OF COLUMNS.

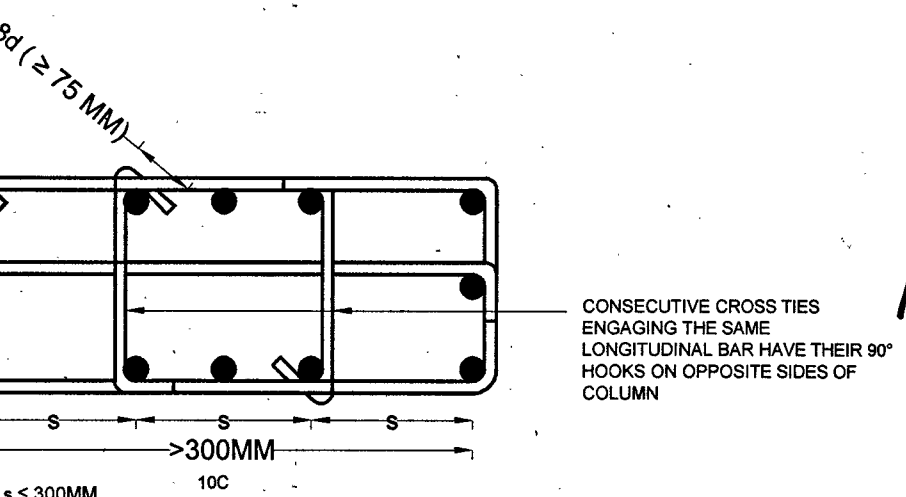
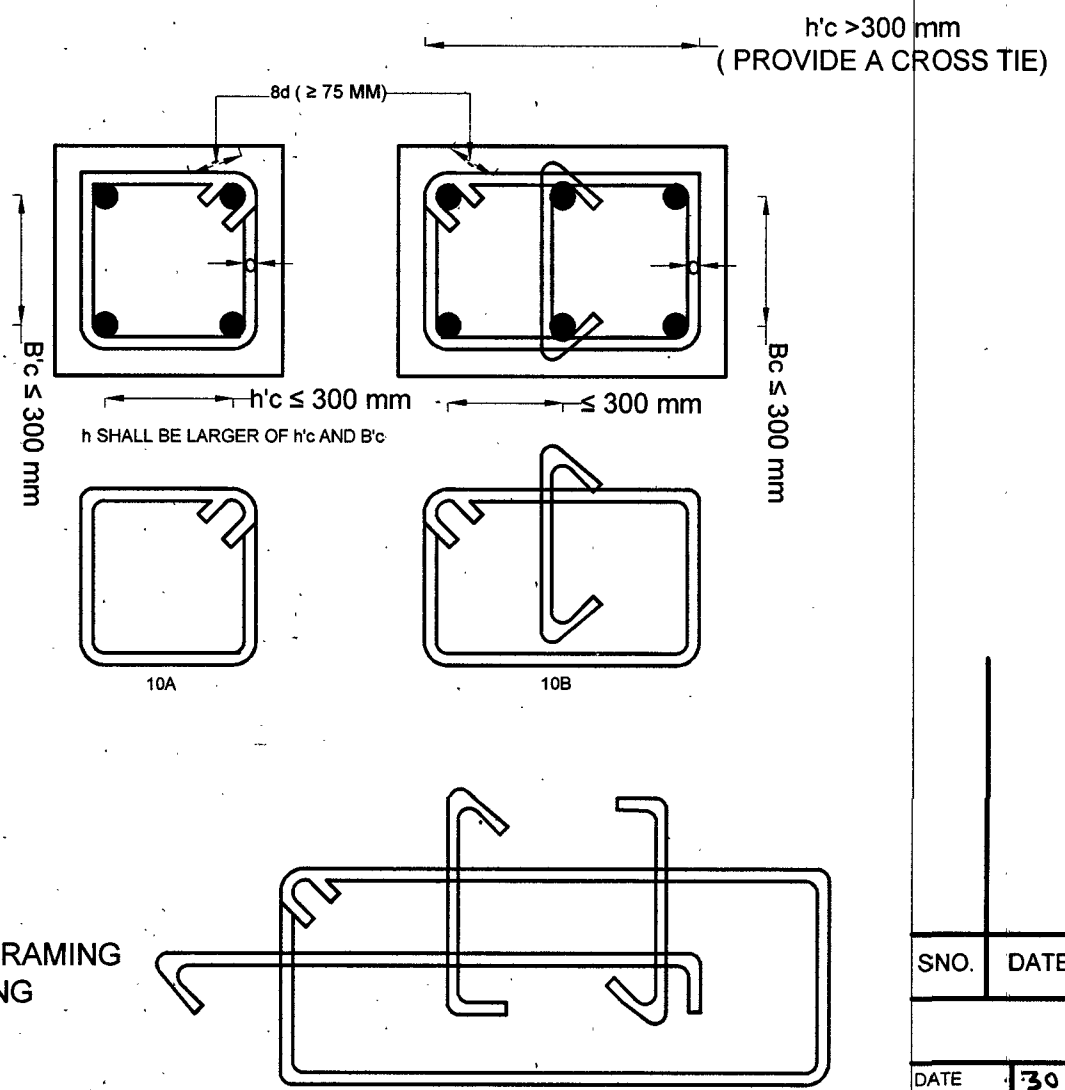
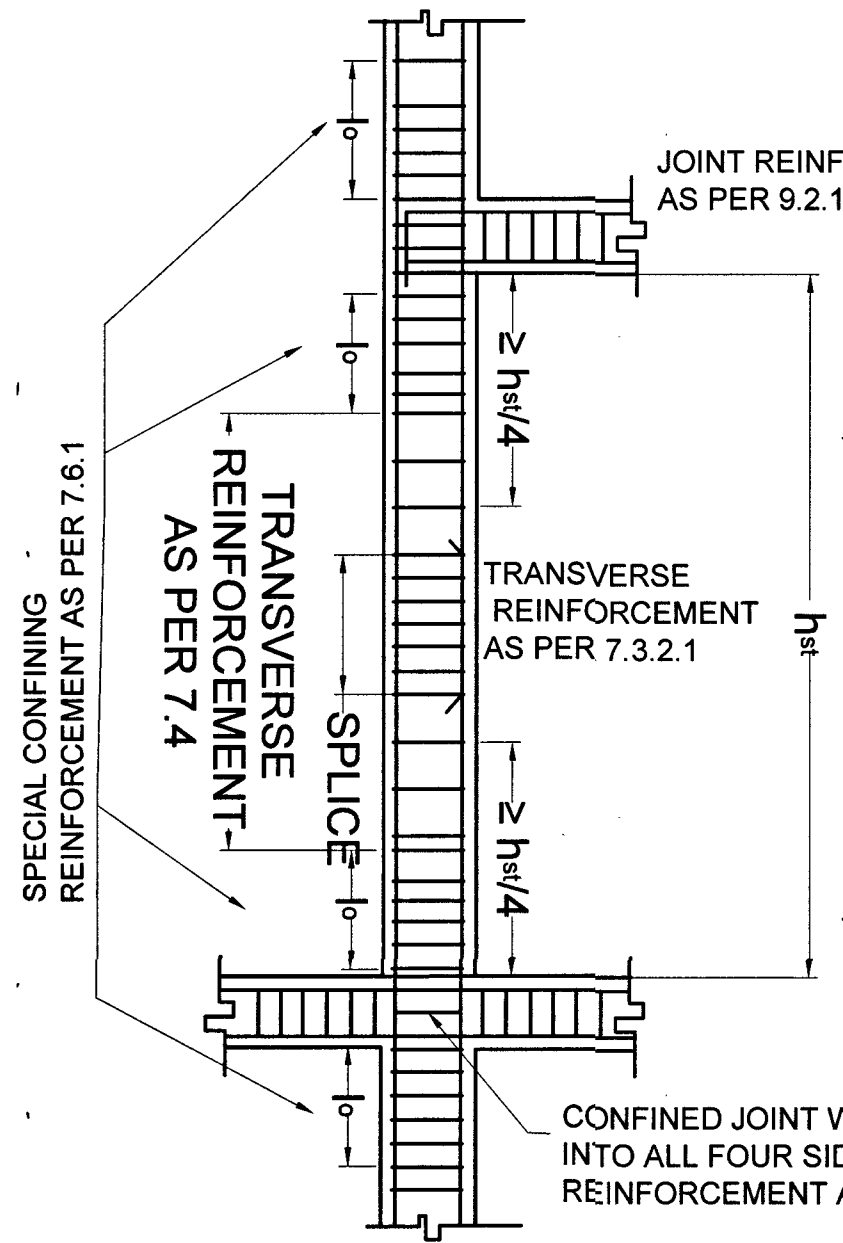


FIG.-28 (a) : COLUMNS AND JOINT DETAILING

NOTE :- CONSTRUCTION JOINT SHALL NOT BE PROVIDED IN REGION OF COLUMNS WITH CLOSELY SPACED TRANSVERSE REINFORCEMENT i.e 'lo' AND THE REGION WHERE LAP SPLICES ARE PROVIDED

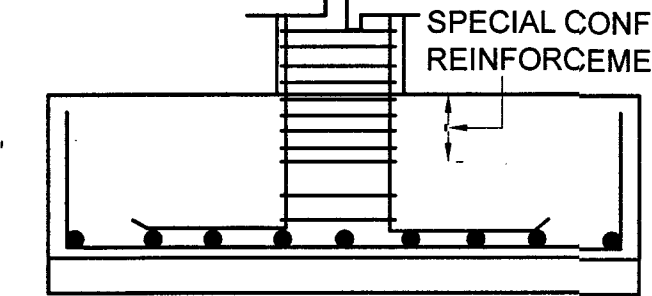


FIG.-28 (b) : PROVISION OF SPECIAL CONFINING REINFORCEMENT IN FOOTING

FIG.-28 (c) : DETAIL OF TRANSVERSE REINFORCEMENT IN COLUMNS

SNO.	DATE	DESCRIPTION	DY. DIR	DIR (DES)
				INITIAL

REVISIONS

DATE	30 MAY 2024	CHIEF ENGINEER JALANDHAR ZONE
DRN	POOJA T	
TCD		
CKD		
SCALE	AS SHOWN	
SHT. SIZE	A3	TYPICAL R.C.C. DETAILS

Bombay
AAD (DESIGN)
COLUMN REINFORCEMENT

DRG. NO.	SHEET NO.
	17/34
DRG NO CEJZ / STD- 422/24	

Uart
DIR (DESIGN)
FOR CHIEF ENGINEER